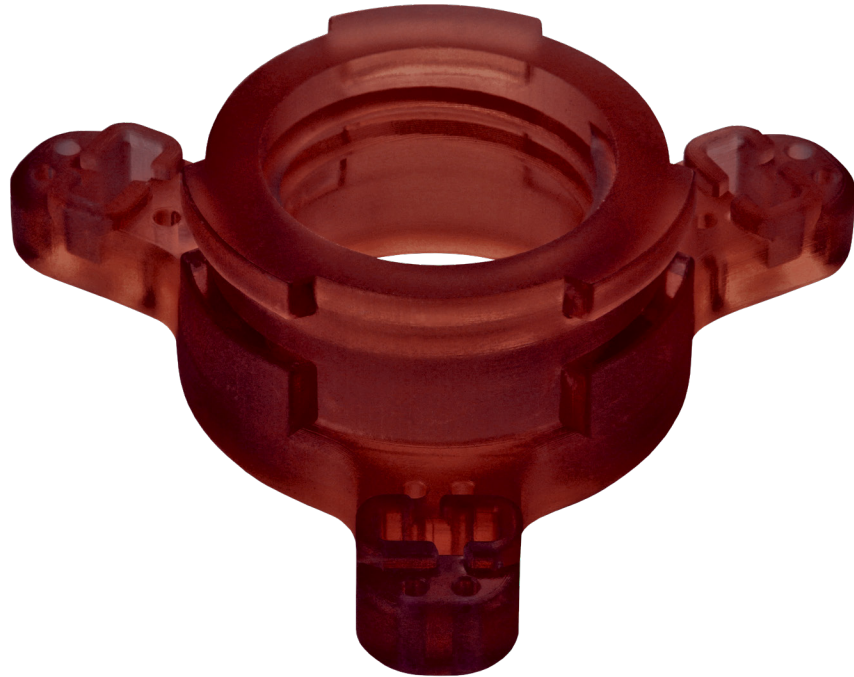


## R5

Let us  
print your  
part!<sup>1</sup>



EnvisionTEC R5 is a liquid photopolymer that produces robust, accurate and functional parts. The material offers superior chemical resistance, a wide processing latitude, and excellent tolerance to a broad temperature and humidity range during and after build. Parts created from R5 exhibits superior fatigue properties, strong memory retention and high-quality up-facing and down-facing surfaces. For very small, high-detail parts, please consider R11 as an alternative.

Material Properties <sup>2</sup>	Description	
D638M	Tensile Strength	31-39 MPa
D638M	Elongation at Break	11-25%
D638M	Elongation at Yield	16%
D638M	Modulus of Elasticity	1,245-1,510 MPa
D790M	Flexural Strength	40-45 MPa
D790M	Flexural Modulus	1,190 - 1,383 MPa
D256A	Izod Impact - Notched	0.2 - 0.50 J/cm
D2204	Hardness (Shore D)	81 Shore
D570-98	Water Absorption	0.78%
D1004	Graves Tear	154,287 N/m

### Recommended 3D Printer Family<sup>3</sup>

Perfactory Family, Micro Family

<sup>1</sup> Learn more at [EnvisionTEC.com/printmypart](https://www.ensonvision.com/printmypart)

<sup>2</sup> All data provided is preliminary and must be verified by the individual user

<sup>3</sup> May not be suitable for all machine models within a 3D printer family. Please refer to specific model online for compatibility.